



Investor Presentation

February 2025

GLOBAL METALS EXPLORER

www.orosur.ca | TSXV:OMI / AIM:OMI

Disclaimer

This document has been issued by Orosur Mining Inc. (the "Company"). This document does not constitute or form part of any offer or invitation to sell or issue, or any solicitation of any offer to purchase or subscribe for, any securities of the Company, nor shall any part of it nor the fact of its distribution form part of or be relied on in connection with any contract or investment decision relating thereto, nor does it constitute a recommendation regarding the securities of the Company. In particular, this document and the information contained herein does not constitute an offer of securities for sale in the United States.

This document is being supplied solely for information. The information in this document has been provided by the Company or obtained from publicly available sources. No reliance may be placed for any purposes whatsoever on the information or opinions contained in this document or on its completeness. No representation or warranty, express or implied, is given by or on behalf of the Company or any of the Company's directors, officers or employees or any other person as to the accuracy or completeness of the information or opinions contained in this document and no liability whatsoever is accepted by the Company or any of the Company's members, directors, officers or employees nor any other person for any loss howsoever arising, directly or indirectly, from any use of such information or opinions or otherwise arising in connection therewith. Nothing in this document or in the documents referred to in it should be considered as a profit forecast. Past performance of the Company or its shares cannot be relied on as a guide to future performance.

All statements, other than statements of historical fact, contained in this presentation constitute "forward looking statements" within the meaning of applicable securities laws, including but not limited to the "safe harbour" provisions of the United States Private Securities Litigation Reform Act of 1995 and are based on expectations estimates and projections as of the date of this presentation. Forward-looking statements include, without limitation, the exploration plans in Colombia, Argentina and Nigeria; the ability for the Company's wholly owned subsidiary Loryser to conclude its creditors agreement (Creditors Agreement) successfully in Uruguay as well as continuation of the business of the Company on a going concern and other events or conditions that may occur in the future. The Company's continuance as a going concern is dependent upon its ability to obtain adequate financing and to reach a satisfactory conclusion to the Creditors Agreement in Uruguay. These material uncertainties may cast significant doubt upon the Company's ability to realize its assets and discharge its liabilities in the normal course of business and accordingly the appropriateness of the use of accounting principles applicable to a going concern. There can be no assurance that such statements will prove to be accurate. Actual results and future events could differ materially from those anticipated in such forward- looking statements. Such statements are subject to significant risks and uncertainties including, but not limited, those as described in Section "Risks Factors" of the Company's most recent Management's Discussion and Analysis. The Company disclaims any intention or obligation to update or revise any forward-looking statements whether as a result of new information, future events and such forward-looking statements, except to the extent required by applicable law.

Qualified Person's Statement

The information in this presentation was compiled, reviewed and verified by Mr. Brad George, BSc hon (Geology and Geophysics), MBA, Member of the Australian Institute of Geoscientists (MAIG), CEO of Orosur Mining Ltd and a qualified person as defined by National Instrument 43-101.

For further details regarding any of Orosur's projects, please refer to the technical reports available under Orosur company profile, or on SEDAR at www.sedar.com

This document is provided for general information only and does not purport to contain all the information that may be required to evaluate the Company or its securities. The information in this document is provided as at the date of this document (unless stated otherwise) and is subject to updating, completion, revision and is not independently verified. No reliance may be placed for any purpose whatever on the information or opinions contained or expressed in this document or on the accuracy, completeness or fairness of such information and opinions.

Company in Summary



- **Two major gold exploration projects in key endowed regions**
- **Both gold projects 100% owned or with JV pathway to 100%.**
- **Large landholdings - 400km² in Colombian mid-Cauca belt and 560km² in Argentina's Deseado Massif.**
- **Spectacular recent drilling at Pepas prospect, Anzá Project Colombia.**
- **Early stage El Pantano project in Argentina. Drill permits received, commencing work in March.**



Corporate Snapshot



12 Month Share Performance



Capital Structure and Key Metrics (18th Feb 2025)

Basic Shares Outstanding	265,821,606
Options	10,988,332
Warrants	27,297,800
Fully Diluted Shares Outstanding	304,107,738
Market Cap 18th Feb 2025	c£35m
Cash on Hand	cUS\$2m

Directors and Management

Name	Position
Louis Castro	Director and Executive Chairman
Brad George	Director and CEO
Thomas Masney	Non-Executive Director
Nick Von Schirnding	Non- Executive Director
Joaquín L. Sarroca	Corporate Counsel, Company Secretary
Omar Gonzalez	CFO
Jerónimo Jáñez	Principal Geologist
Ernesto Slavutsky	Principal Geologist
Liliana Muñoz	Colombia Country Manager

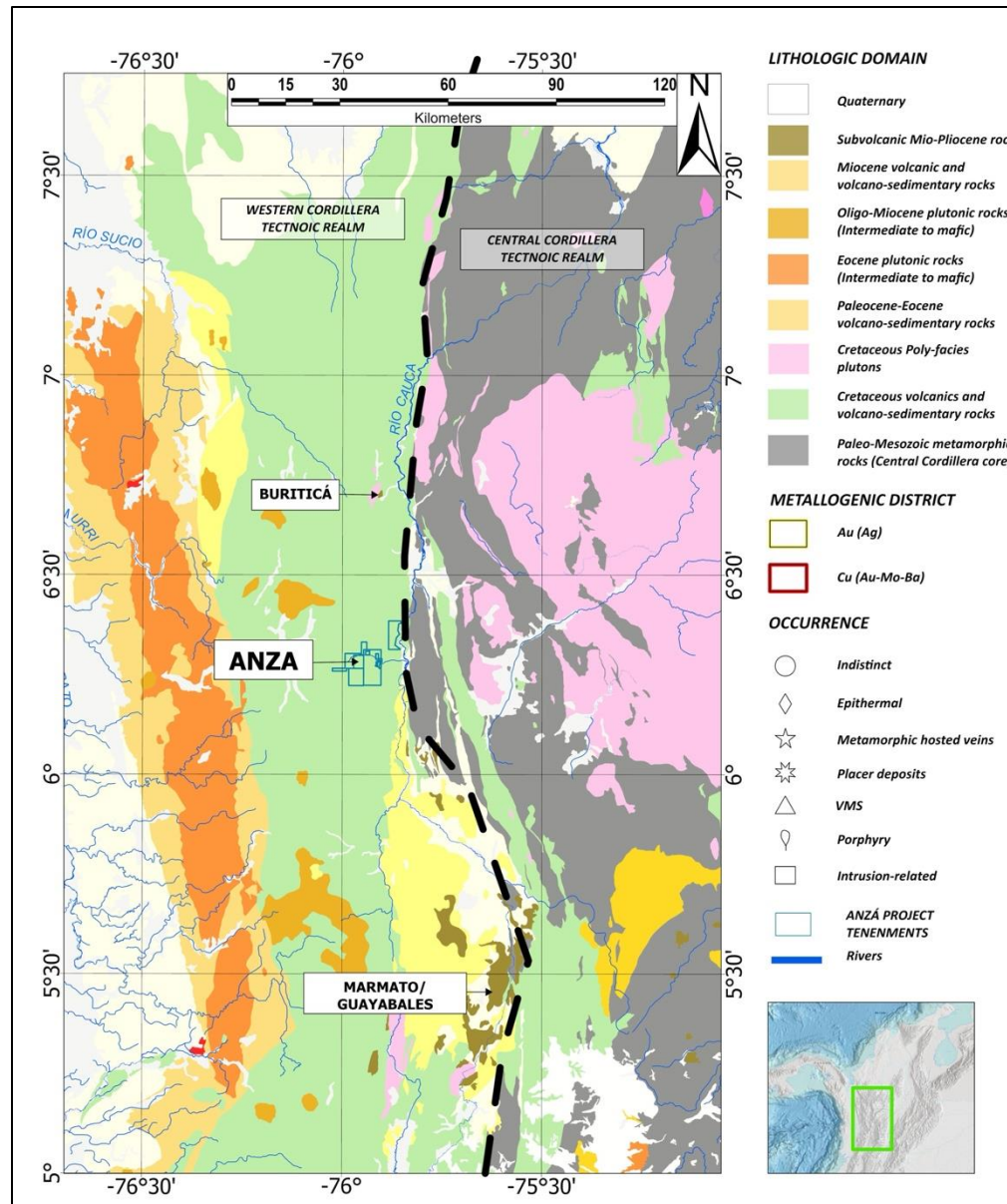
Investment Thesis – currently drilling



- **100% of two key gold projects in buoyant gold market – Anzá and El Pantano**
- **Pepas gold prospect (Anzá) drilling showing spectacular results.**
- **APTA gold prospect (Anzá) could be moved to resource in near term.**
- **El Cedro/El Roble (Anzá) potential gold porphyry**
- **El Pantano gold project in Argentina – early stage but huge potential.**
- **Broken from the pack – institutional interest beginning.**



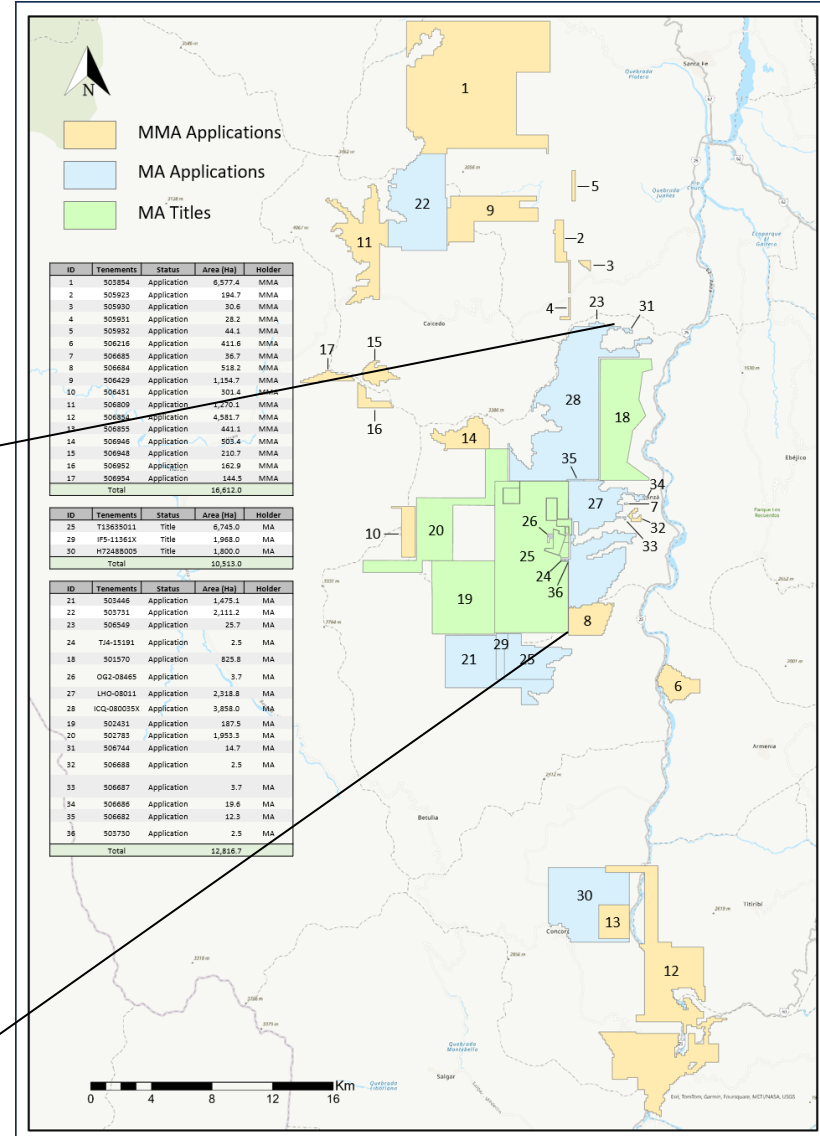
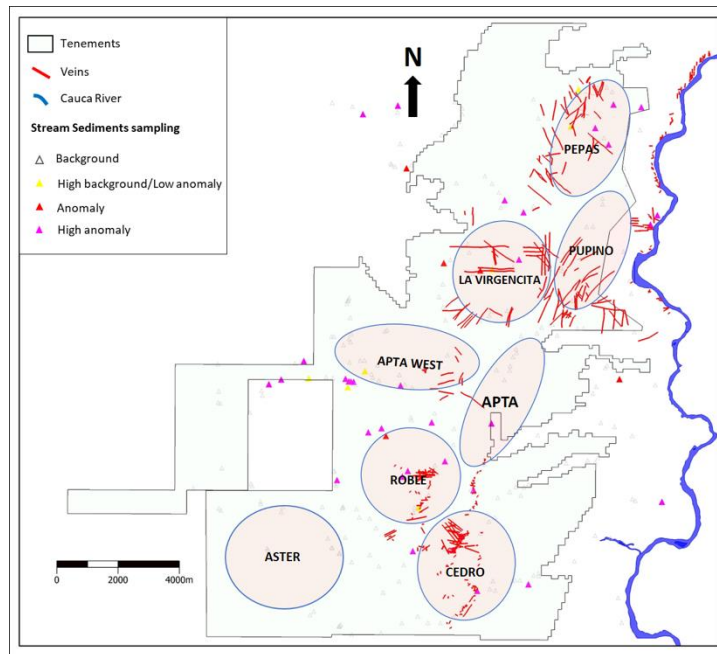
Mid-Cauca belt – dominant position



Anzá Project Colombia



- **Owned 100% post MMA acquisition**
- **399km2 of granted licences and applications**
- **Dominant position in Colombia's prime gold belt**



MMA = Minera Monte Aguila. MA=Minera Anza

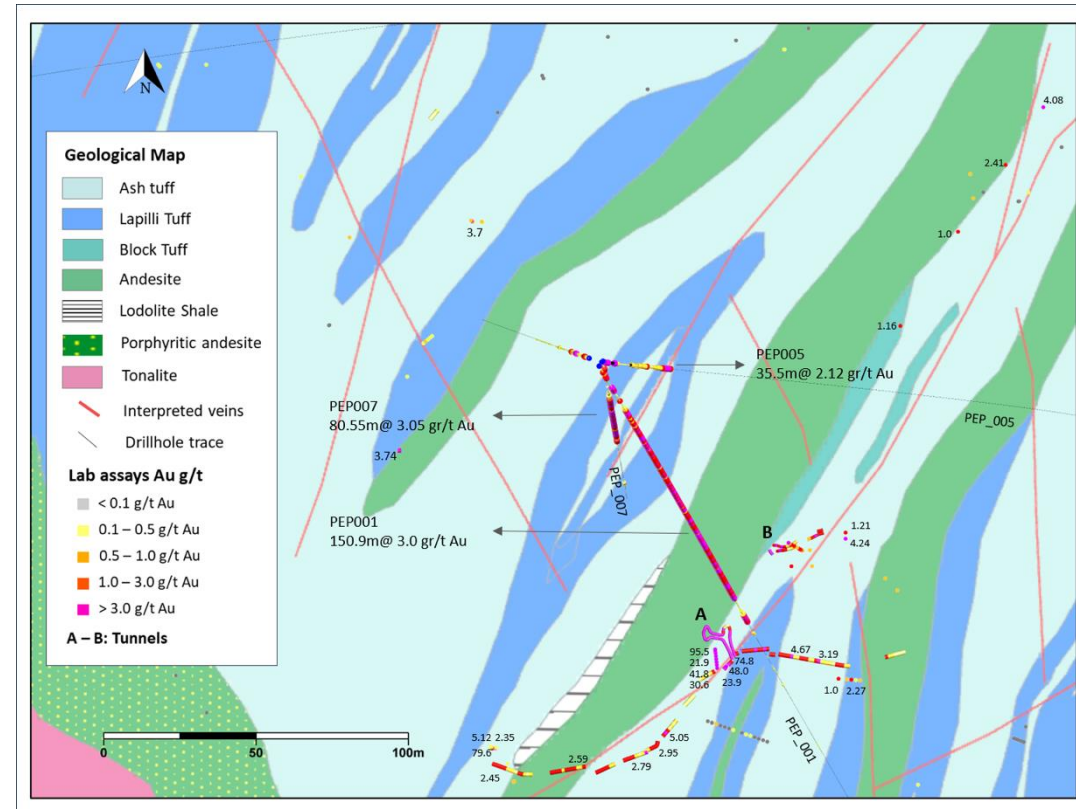
Anzá deal – key points

- **Purchased the Colombian JV company of Newmont and Agnico – Minera Monte Aguila (MMA)**
- **1.5% NSR on all future production plus additional \$75/oz royalty on first 200,000 oz of cumulative production (total of US\$15m)**
- **Acquired MMA applications – more than doubling land holding size to 399km².**
- **Dominant landholder in Mid-Cauca belt?**
- **In control of own destiny. No more JV partners.**



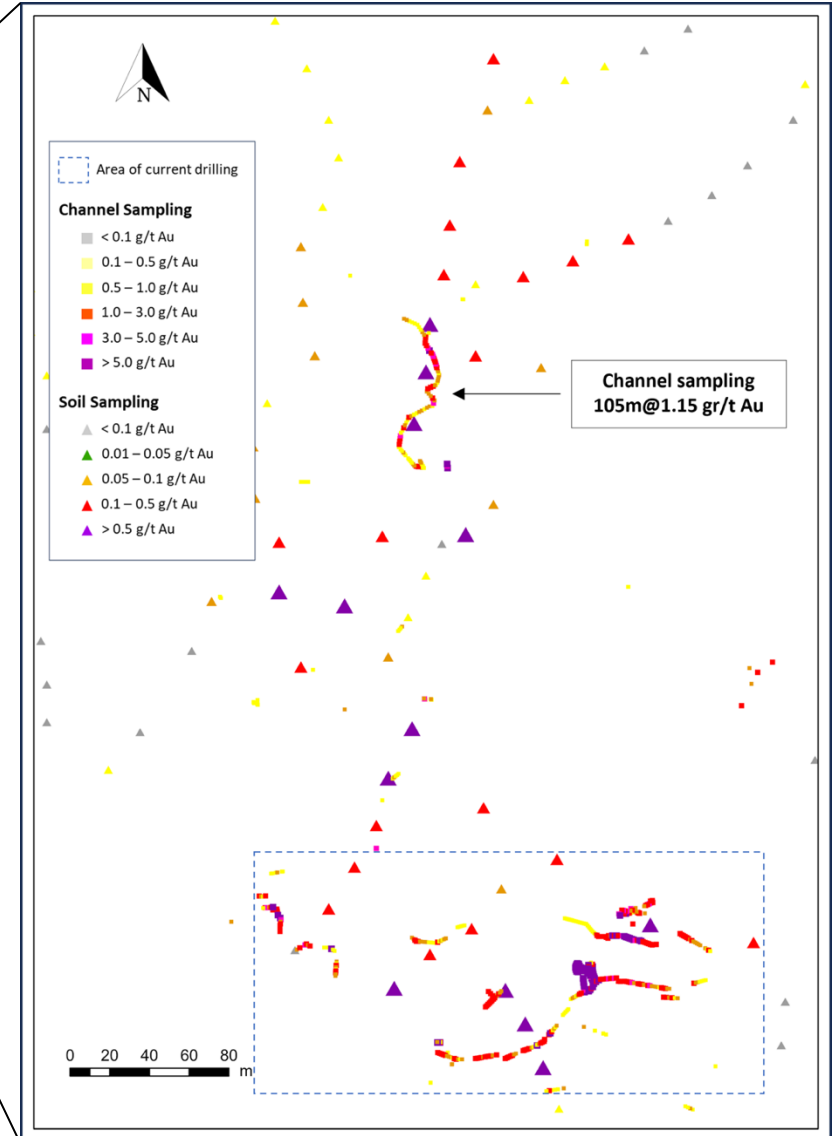
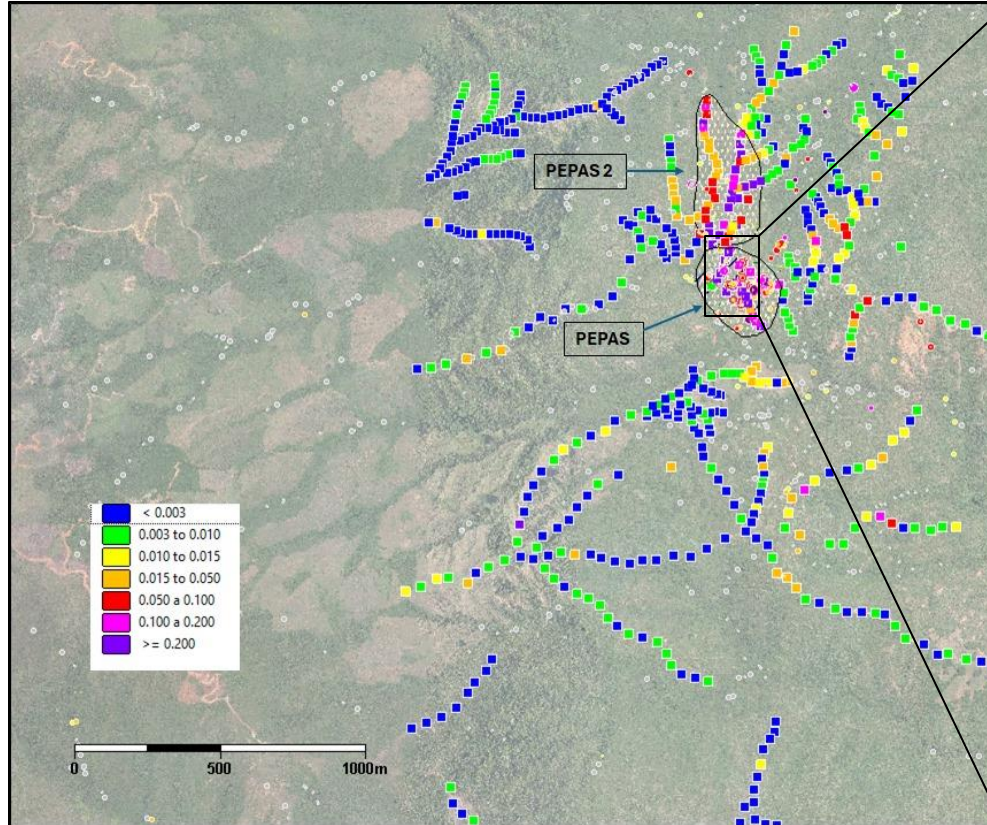
PEPAS – high grade, from surface

- **First drilled by MMA in April 2022.**
- **First hole 150.9m @ 3g/t Au from surface (PEP001)**
- **Later holes 80.55m @ 3.05g/t Au (PEP007) and 35m @ 2.12g/t Au (PEP005)**
- **MMA under time pressure – stepped out and drilled deep without success.**
- **Drilled on the regional trend, not the local control.**
- **OMI assumed control and re-directed**
- **Immediate and spectacular success**



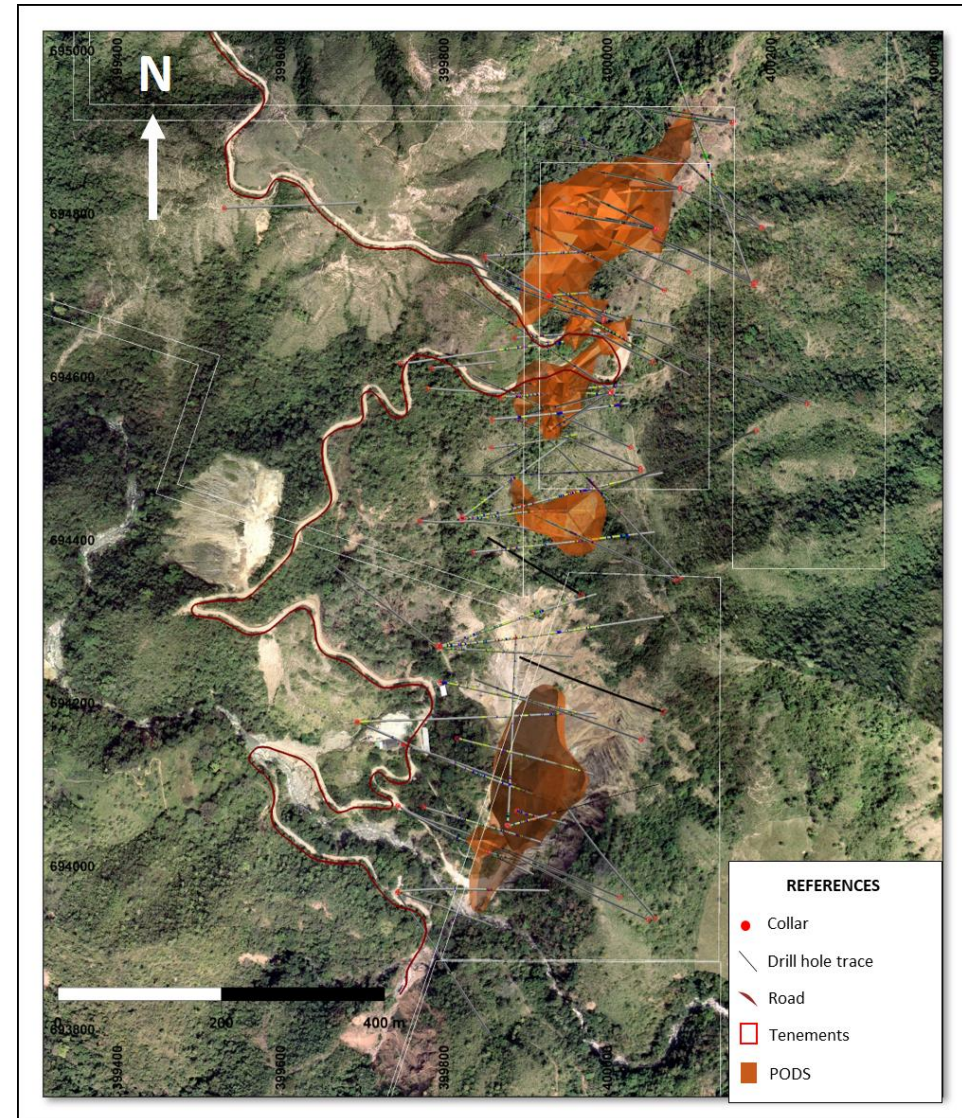
PEPAS – more to find?

Soils and channel samples suggests size potential



APTA Prospect

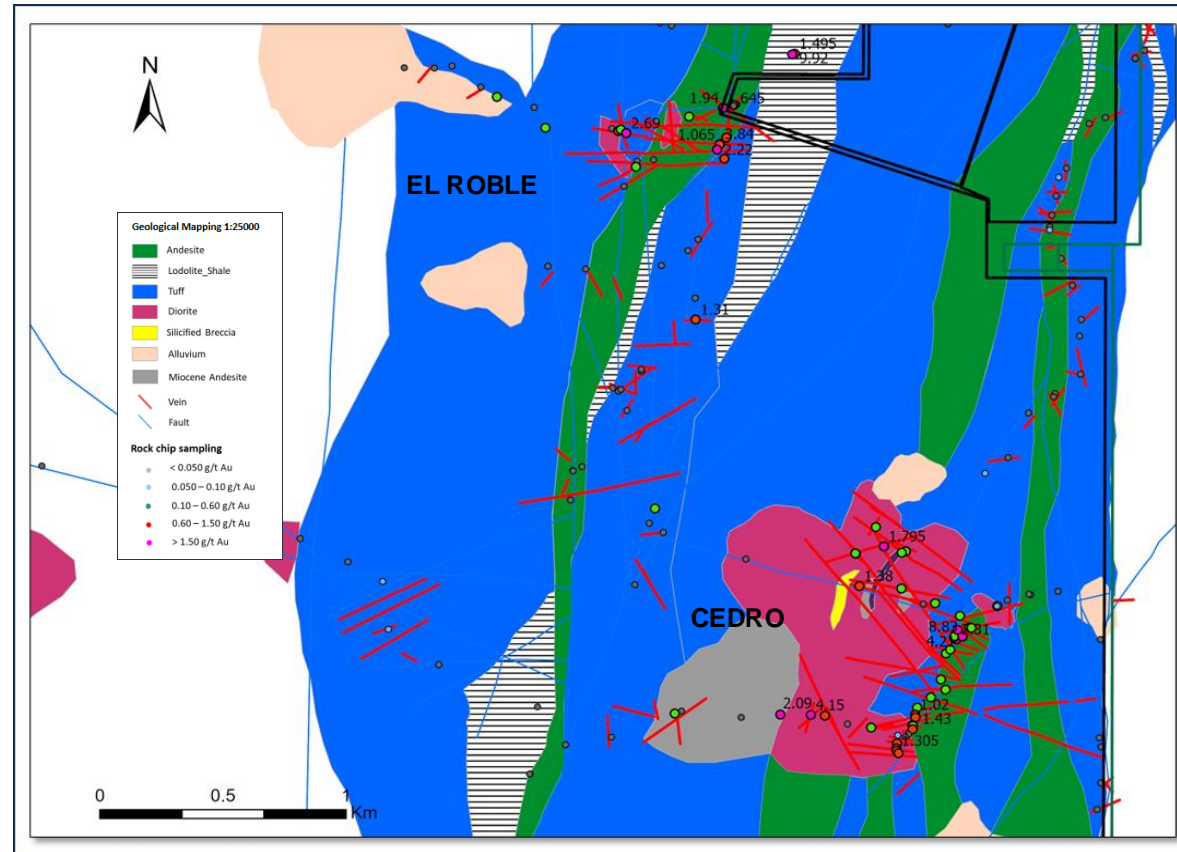
- **Discovered in 2012**
- **Over 38,000m of drilling**
- **Numerous thick, high-grade intersections.**
- **Never moved to resource**
- **OMI have re-modelled internally**
- **Examining pathway to 43-101 resource.**



El Roble and El Cedro – porphyry system



- **El Roble and El Cedro – different parts of one porphyry system?**
- **Widespread, high-grade soil and rock chip anomalism.**
- **Large areas of silicification, veining, alteration – all consistent with large porphyry**
- **Numerous silicified breccias – key hosts.**
- **No drilling**
- **Planning to examine in more detail, need to verify before we can announce.**



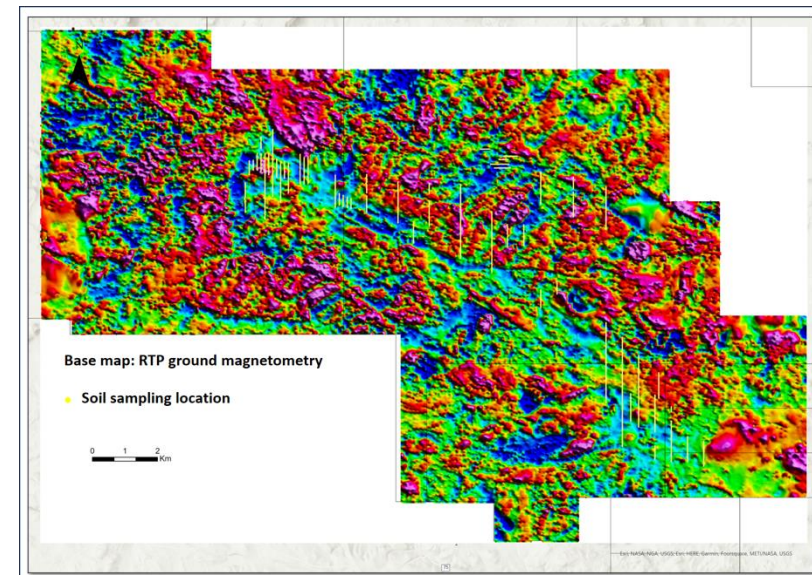
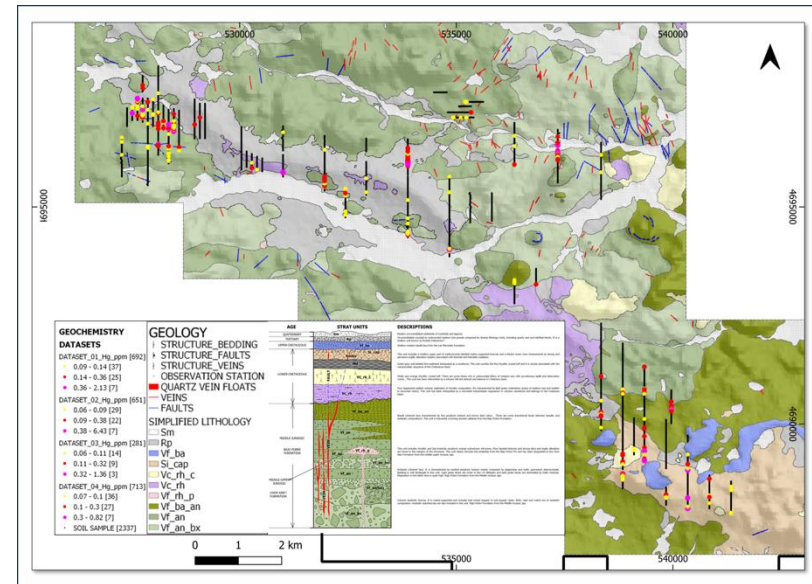
Argentina – El Pantano

- **Intentional move to early stage.**
- **Large land holding in key endowed and mining friendly region (560km²)**
- **Path to 100% ownership.**
- **Low (zero) entry cost, low cost first three years**
- **Known model - Cerro Negro analogue (+15Moz)**
- **Potential for scale – hunting elephants.**
- **Know what we are looking for and seeing what we expect to see.**



El Pantano – drill ready

- **All regional recon work now completed:**
 - **Ground magnetics**
 - **Geological mapping**
 - **First phase geochemistry**
- **All indicators of massive low-sulphidation epithermal system.**
- **Just completed Phase 1 – own 51%**
- **Can now move to 100%**
- **Drill permits received**
- **IP planned March**
- **Drilling later?**



Next Six Months – keep it simple.

- **Non-stop drilling Pepas**
- **If positive, begin to examine feasibility options.**
- **Advance applications to granted status.**
- **APTA – advance to resource?**
- **El Cedro – confirm and advance**
- **EL Pantano – define drill targets**



Appendices

ANZA – Historic Best Results – APTA

Hole Number	From (m)	To (m)	Interval (m)	Au (g/t)	Ag (g/t)	Zn (%)
MAP_011	213	219	6	18.26	1.96	0.35
including	217.5	219	1.5	72.3	6.9	0.93
MAP_020	145	186	41	3.85	1.39	1.25
including	171.3	177	5.7	19.84	3.94	1.66
MAP_021	224	242	18	14.14	2.05	2.83
including	225	229.4	4.4	45.62	5.47	10.59
MAP_021	252	253	1	10.85	1.8	0.67
MAP_029	183	194.9	11.9	10.57	2.4	1.61
including	185	187	2	40.25	4.85	4.64
MAP_033	157.1	179.5	22.4	10.42	1.87	1.56
including	165	170.8	5.8	29.49	3.37	2.81
MAP_036	198.6	227.5	28.9	3.88	1.68	0.43
including	205.5	217.5	12	8.83	2.65	0.59
MAP_038	172	212.5	40.5	14.09	3.82	1.95
including	179.5	186	6.5	70.99	6.34	0.12
including	184.6	186	1.4	176	15.2	0.39
including	202	205.4	3.4	20.89	9.71	4.75
MAP_043	65.5	68.6	3.1	7.66	73.04	0.68
MAP_043	167.5	231.5	64	1.88	1.88	0.7
including	209	214	5	9.07	3.4	0.7
MAP_047	105	118.3	13.3	2.24	316.25	1
including	106	110.5	4.5	4.69	768.89	2.34
MAP_048	181	195.7	14.7	40.37	9	3.41
including	185.5	195.7	10.2	58.03	13.16	4.85
including	187.6	189.5	1.9	219	29.5	6.55

Hole Number	From (m)	To (m)	Interval (m)	Au (g/t)	Ag (g/t)	Zn (%)
MAP-054	41.4	59.3	17.9	2.96	26.97	0.32
including	41.4	43.2	1.8	10.25	76.9	1.22
including	44.7	52	7.3	3.39	33.77	0.37
MAP-054	97.1	110.9	13.8	4.36	1.19	0.77
including	97.1	101.73	4.63	5.47	1.59	1.44
including	107.6	110.9	3.3	10.35	0.83	0.14
MAP-054	144.5	149.82	5.32	17.76	1.55	4.74
including	144.5	145.7	1.2	8.71	0.9	0.8
including	145.7	146.7	1	37.96	1.3	0.7
including	146.7	148	1.3	19.76	1.4	0.25
including	148	148.87	0.87	17.63	1.5	7.56
including	148.87	149.82	0.95	5.31	2.9	17.54
MAP-054	149.82	159.1	9.28	1.84	0.94	2.26
including	153	155	2	3.43	0.97	1.14
MAP-054	309.2	313.2	4	2.96	5.7	0.41
MAP_055	177	190.9	13.9	4.89	4.86	1.35
including	177	181	4	6.26	3.35	0.57
including	185	190.9	5.9	7.24	8.73	2.78
MAP_056	223	235	12	1.33	0.9	0.05
MAP_058	246	250	4	1.1	3.45	0.15
including	274.5	276.5	2	4.55	6.5	0.13
MAP_059	163.5	195	31.5	1.86	2.39	0.49
including	181	188	7	4.66	2.17	0.27
including	192	194	2	3.4	3.55	0.56
MAP_059	230.5	242.5	12	1.96	2.73	0.5
including	230.5	236.5	6	3.15	1.75	0.63

Hole Number	From (m)	To (m)	Interval (m)	Au (g/t)	Ag (g/t)	Zn (%)
MAP-060	70	75.5	5.5	3.34	3.55	0.56
MAP-060	165	192	27	1.81	0.87	0.33
including	180	186	6	2.92	0.67	0.2
including	189	192	3	4.6	2.9	1.52
MAP-060	222	247	25	4.86	3.23	1.73
including	222	226	4	7.92	4.13	1.94
including	235	238	3	9.54	5.37	0.33
including	245	246	1	14.43	3.4	0.95
MAP_062	60	65.3	5.3	5.09	12.06	0.37
including	62.2	64.2	2	7.61	16.9	0.8
MAP_062	167.5	176.5	9	1.69	0.62	
MAP_062	217	240	23	5	3.37	0.4
including	220	221	1	16.02	9.4	0.81
including	229.7	232.2	2.5	8.59	2.98	0.66
including	237.7	240	2.3	14.94	7.88	0.13
MAP_064	116	122	6	1.57	19.98	1.73
MAP_064	190	197	7	3.45	1	3.79
including	193	197	4	5.43	1.5	6.41
MAP_065	140	144.1	4.1	2.22	1.37	0.04
MAP_065	283.3	288.45	5.15	1.24	5.75	0.11
including	284.3	286.1	1.8	2.7	10.3	0.09
MAP_067	161.7	168.1	6.4	1.74	2.52	0.34
including	162.8	165	2.2	4.14	30.5	0.79
MAP_067	176.4	192.2	15.8	1.07	2.04	0.06
including	179	184	5	2.24	3.28	0.13
MAP_067	235	243.2	8.2	1.36	0.78	0.38
including	237	241.2	4.2	2.09	0.87	0.49

ANZA – Historic Best Results – APTA

Hole Number	From (m)	To (m)	Interval (m)	Au (g/t)	Ag (g/t)	Zn (%)
MAP_070	168	192	24	1.84	1.64	1.09
Including	168	173	5	1.66	3.52	4.81
Including	183	184	1	23.66	3.6	0.04
Including	186	192	6	1.16	0.72	0.02
MAP_070	221	233	12	5.28	2.48	1.1
Including	222	226	4	6.38	3.1	2.28
Including	228	233	5	6.99	2.78	0.65
MAP_070	284	298	14	5.02	2.23	1.1
Including	286	292	6	9.62	2.9	1.75
MAP_070	302	307	5	1.57	3.94	1.67
MAP_072	108.00	112.10	4.10	6.52	29.74	0.28
Including	109.85	111.08	1.23	14.55	9.52	0.21
MAP_072	171.10	177.00	5.90	4.55	2.74	0.30
Including	175.50	177.00	1.50	11.97	5.45	0.73
MAP_072	184.80	255.30	70.50	3.53	9.33	1.62
Including	188.50	190.42	1.92	9.18	2.69	1.86
Including	205.90	206.90	1.00	19.87	10.39	1.16
Including	210.80	212.90	2.10	7.00	5.57	2.00
Including	220.10	228.60	8.50	6.73	4.63	3.69
Including	240.65	255.30	14.65	5.33	3.28	2.11
MAP_073	271.75	293.35	21.6	6.02	6	3.23
Including	272.6	279.8	7.2	17.17	10.64	9.28
Including	275.75	276.95	1.2	96.44	34.81	29.98
MAP_074	181	200.6	19.6	0.7	6.2	1.42
MAP075	216.65	253.95	37.3	0.72	1.8	3.58
Including	226.15	246	19.85	0.9	2.17	6.46
Including	226.15	230.5	4.35	2.53	4.93	12.98

Hole Number	From (m)	To (m)	Interval (m)	Au (g/t)	Ag (g/t)	Zn (%)
MAP076	228.65	240.9	12.25	5.39	1.65	0.18
Including	236.35	238.3	1.95	30.82	4.66	0.52
MAP079	270.45	294.2	23.75	17.4	1.84	0.19
Including	270.45	272.6	2.15	178.92	11.29	0.15
Including	271	271.4	0.4	948	57.7	0.7
Including	271.4	271.8	0.4	11.6	1.01	0.02
Including	286.4	294.2	7.8	3.25	1.28	0.45
Including	288.5	289.6	1.1	8.83	1.8	0.79
Including	292.65	294.2	1.55	7.33	1.46	0.66
MAP079	315.5	320.6	5.1	1.78	17.25	0.09
Including	317.4	318.5	1.1	5.56	25.26	0.22
MAP082	227.2	256.65	29.45	2.5	1.95	1.08
Including	236.75	237.05	0.3	3.99	1.68	0.56
Including	245.65	251.1	5.45	11.42	6.89	4.6
MAP086	179.2	183.1	3.9	6.12	17.27	0.79
Including	180.7	181.3	0.6	36	63.8	4.44
MAP086	215.35	234.07	18.72	2.85	2.95	1.59
Including	216.9	220.35	3.45	3.02	2.49	1.39
Including	226.7	230.2	3.5	8.18	4.7	1.55
Including	232.57	233.1	0.53	9.01	7.66	0.78
MAP088	246.8	278.25	31.45	0.74	1.96	0.21
Including	247.4	253.05	5.65	1.29	2.54	0.19
Including	276.2	278.25	2.05	1.7	2.07	0.25

Hole Number	From (m)	To (m)	Interval (m)	Au (g/t)	Ag (g/t)	Zn (%)
MAP089	251.1	255.4	4.3	9.31	5.4	6.14
Including	251.75	254.5	2.75	14.16	7.67	9.38
Including	253.95	254.5	0.55	30.4	5.4	2.35
MAP089	275.1	334.65	59.55	9.61	6.23	3.75
Including	288.95	323.7	34.75	15.86	7.56	6.21
Including	286.25	287.3	1.05	5.66	4.88	2.06
Including	288.95	291.25	2.3	6.92	5.08	0.81
Including	294.85	297.5	2.65	6.1	8.72	10.9
Including	298.88	300.23	1.35	12.89	9.62	8.27
Including	302.9	305.1	2.2	6.19	3.1	3.86
Including	306.75	308.95	2.2	7.68	4.95	11.9
Including	311.45	323.7	12.25	36.08	11.65	8.48
MAP090	174.3	177.4	3.1	12.96	2.56	4.66
Including	175.4	177.4	2	19.8	2.55	2.36
Including	175.4	175.9	0.5	55.7	5.79	7.01
MAP090	180.15	186.2	6.05	9.91	1.56	0.48
Including	181.65	182.4	0.75	24.4	2.06	0.93
Including	184.5	186.2	1.7	22.58	3.35	0.8
MAP091	222.55	284.3	61.75	2.05	3.3	0.82
Including	223	224.8	1.8	8.75	5.28	2.91
Including	232	233	1	4.34	3.85	2.12
Including	237.9	238.3	0.4	6.99	4.03	4.54
Including	250.5	253.05	2.55	9.08	2.78	0.75
Including	268.05	277.45	9.4	5.12	3.25	2.37
MAP091	316.2	320.88	4.68	2.33	1.72	0.13
Including	320.4	320.88	0.48	11.1	4.29	0.89
MAP093	281.8	327.2	45.4	0.74	1.7	0.33
Including	281.8	296.65	14.85	1.6	1.08	0.79
Including	281.8	283.05	1.25	4.19	0.79	0.18
Including	295.85	297.25	1.4	10.8	2.04	1.9